

BRUNTON

RESIDENTIAL



SPRINGFIELD CLOSE, OVINGTON, PRUDHOE, NE42

£385,000

BRUNTON

RESIDENTIAL





BRUNTON

RESIDENTIAL



BRUNTON

RESIDENTIAL



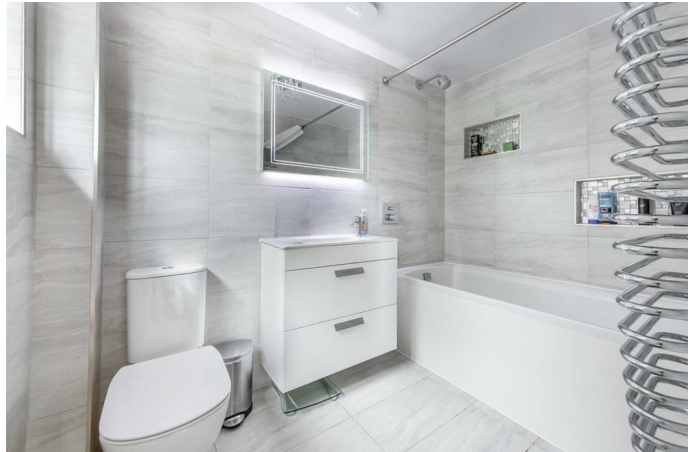
Wonderful detached home occupying a pleasant position within the desirable estate in the village of Ovington, offering stylish and contemporary accommodation throughout.

A particular feature of the property is the impressive open-plan kitchen, dining and family room, creating a superb heart of the home ideally suited to modern family living and entertaining. The property further benefits from a bay-fronted snug, ground-floor shower room, three bedrooms and a family bathroom.

Ovington is a highly sought-after Tyne Valley village, offering a peaceful setting whilst remaining conveniently positioned for access to Prudhoe, Newcastle and the wider region. The village is surrounded by attractive countryside and remains popular with families and commuters alike.

BRUNTON

RESIDENTIAL



BRUNTON

RESIDENTIAL

The accommodation is entered via a spacious entrance porch, leading into a welcoming central hallway with a staircase rising to the first floor. Off the hallway is a stylish ground-floor shower room, fully tiled and fitted with a WC, ceramic wash hand basin with vanity storage, and contemporary fixtures.

To the front of the property, a bright and elegant bay-fronted living room provides a comfortable reception space, flooded with natural light. Interconnecting doors allow the room to be opened into the main living areas for a seamless flow or closed off to create a more private setting.

Undoubtedly the centrepiece of the home is the superb open-plan kitchen, dining and family room to the rear. Designed with modern family living and entertaining in mind, this impressive space features a contemporary fitted kitchen with a central island, composite work surfaces, and an excellent range of integrated Neff appliances including two ovens, microwave, induction hob and extractor hood. Additional appliances include an integrated dishwasher, and an American-style fridge freezer. Generous dining and seating areas create a versatile living environment, while multiple skylights and glazed doors flood the room with natural light and provide direct access to the patio and gardens beyond.

The first floor offers three well-proportioned bedrooms and a family bathroom. The principal bedroom is a spacious double room, while the remaining bedrooms are ideal for children, guests, or those requiring a home office. The family bathroom is fitted with a bath, wash hand basin and WC.

Externally, the property benefits from wrap-around gardens have been thoughtfully designed for low maintenance. The property provides ample off-road parking for several vehicles together with a garage. The garage benefits from a roller door, eaves storage, a utility space comprising a washing machine and dryer, a sink, and an additional storeroom offering excellent practical storage.



BRUNTON

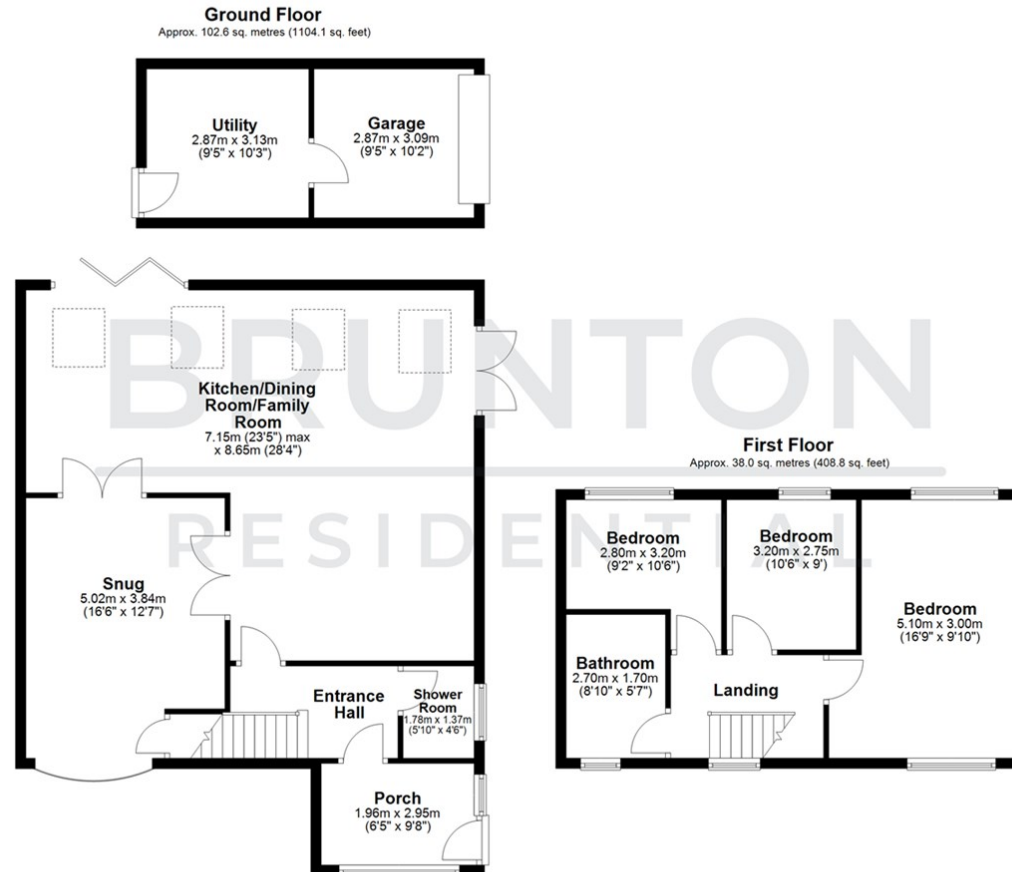
RESIDENTIAL

TENURE : Freehold

LOCAL AUTHORITY : Northumberland CC

COUNCIL TAX BAND : D

EPC RATING : D



Total area: approx. 140.6 sq. metres (1512.9 sq. feet)

